

4

3

2

1

D

D

C

C

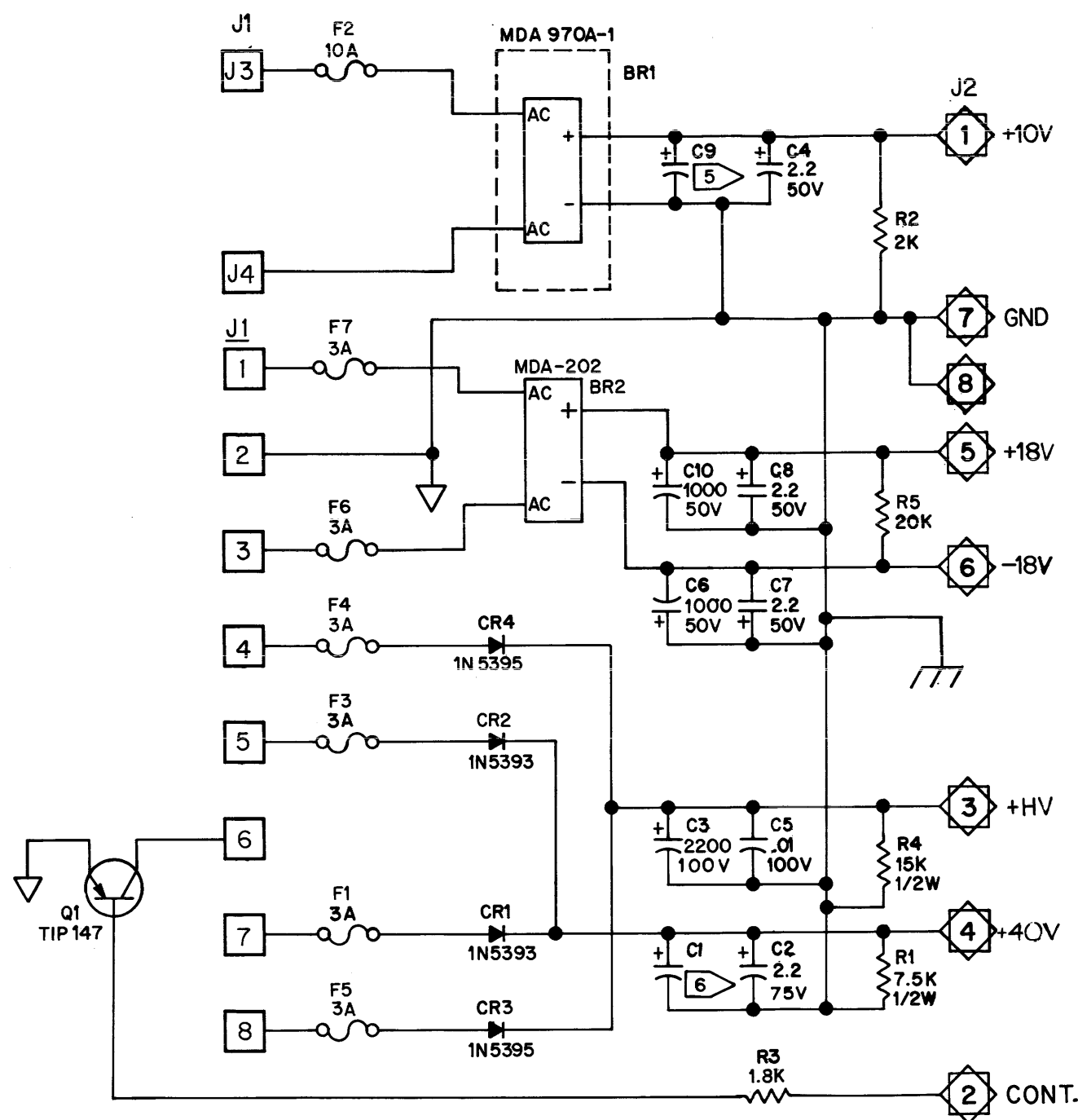
B

B

A

A

REVISIONS				
LTR	DESCRIPTION	CK	PE	APP DATE
A	RELEASE	6/23/83		
B	ADCN A1, ECP NO. 0001	6/27/83	WT	
C	ADCN B1, ECP NO. 0024	6/27/83	WT	6/27/83



ASSY 701-1672-009

NOTES: UNLESS OTHERWISE SPECIFIED

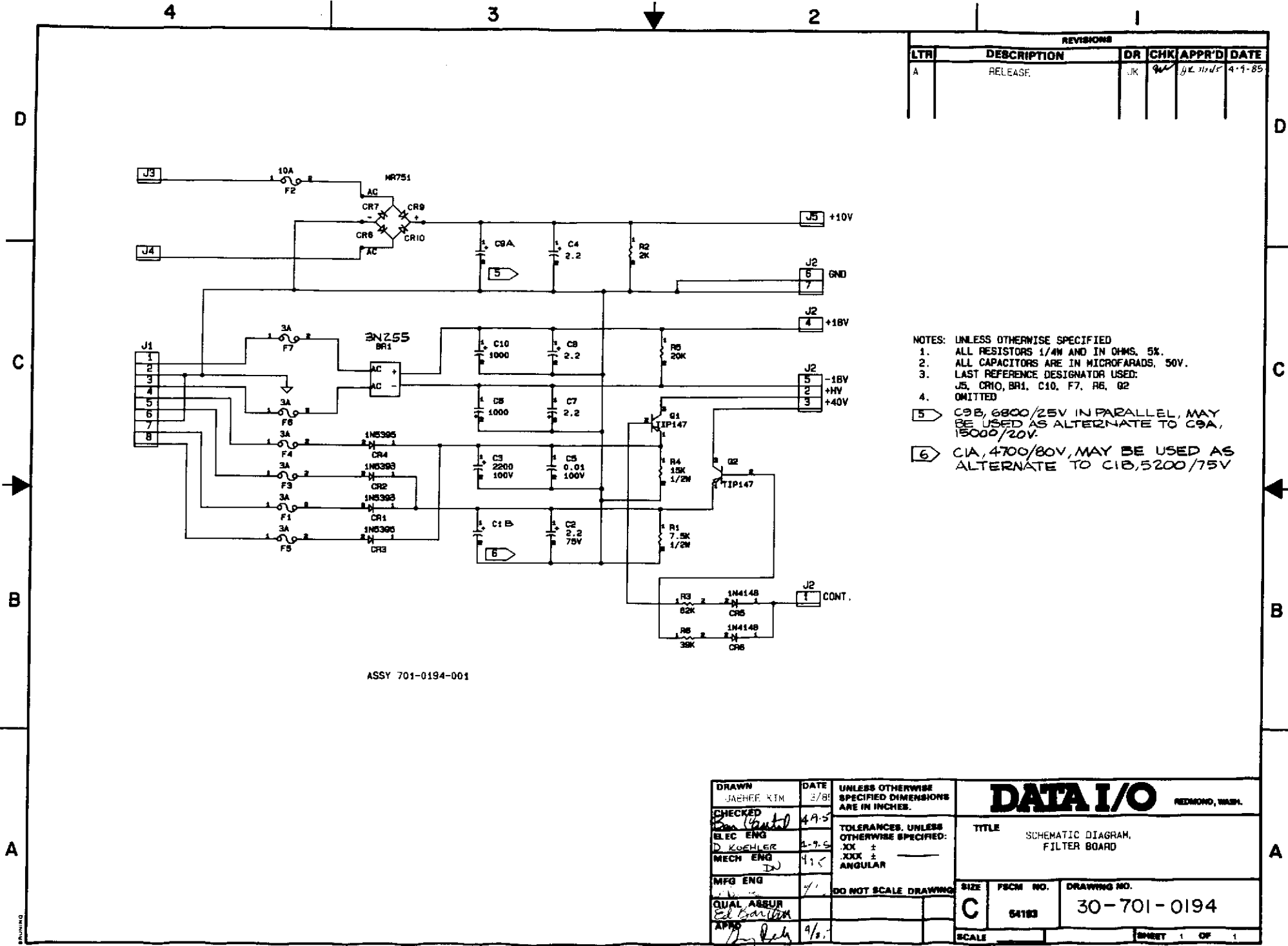
- 1. ALL RESISTORS 1/4W AND IN OHMS, ±5%.
- 2. ALL CAPACITORS ARE IN MICROFARADS.
- 3. LAST REF. DES. USED:

J2 CR4  
BR2 C10  
F7 R5

- 5 C9A: 15000/20V (-009,-010).  
C9B:(QTY 2) 6800/25V IN PARALLEL(-011,-012).
- 6 C1A: 4700/80V (-010,-012).  
C1B: 5200/75V (-009-011).

THIS DOCUMENT CONTAINS INFORMATION CONSIDERED PROPRIETARY, AND SHALL NOT BE REPRODUCED WHOLLY OR IN PART, NOR DISCLOSED TO OTHERS WITHOUT THE SPECIFIC WRITTEN PERMISSION OF DATA I/O CORP.

TOLERANCES (EXCEPT AS NOTED)	<b>DATA I/O</b>		
DECIMAL ±	TITLE SCHEMATIC DIAGRAM, FILTER BOARD		
ANGULAR ±			
DRAWN BY: JUNE 21, 83 BARRY VALDIVIA	SIZE C	CODE IDENT. NO. 54193	DRAWING NO. 30-701-1672
APPROVED BY:	SCALE NONE	SHEET 1 OF 1	



REVISIONS				
LTR	DESCRIPTION	DR	CHK	APPR'D DATE
A	RELEASE	JJK	gk	gk 4-1-85

- NOTES: UNLESS OTHERWISE SPECIFIED
1. ALL RESISTORS 1/4W AND IN OHMS, 5K.
  2. ALL CAPACITORS ARE IN MICROFARADS, 50V.
  3. LAST REFERENCE DESIGNATOR USED:  
J5, CR10, BR1, C10, F7, R6, Q2
  4. OMITTED
- 5 C9B, 6800/25V IN PARALLEL, MAY BE USED AS ALTERNATE TO C9A, 15000/20V.
- 6 C1A, 4700/80V, MAY BE USED AS ALTERNATE TO C1B, 5200/75V

ASSY 701-0194-001

DRAWN JAHEE XIM	DATE 3/81	UNLESS OTHERWISE SPECIFIED DIMENSIONS ARE IN INCHES.	<b>DATA I/O</b> REDMOND, WASH.	
CHECKED <i>[Signature]</i>	4-9-81			
ELEC ENG D KOEHLER	2-9-81	TOLERANCES, UNLESS OTHERWISE SPECIFIED: .XX ± .XXX ± ANGULAR	TITLE SCHEMATIC DIAGRAM, FILTER BOARD	
MECH ENG D	4/15		DO NOT SCALE DRAWING	SIZE C
MFG ENG	4/1		DRAWING NO. 30-701-0194	
QUAL ASSUR Ed Garton			SCALE	SHEET 1 OF 1
APPR <i>[Signature]</i>	4/6			



**SERVICE CHANGE NOTICE**

SHEET 1 OF 1

ASSY.# 701-0194/(1672)      DATE 10-8-86      SCN# 002

TITLE: 29B FILTER BOARD

REASON FOR CHANGE: TO CORRECT A LONG TERM PROBLEM WITH SECONDARY FUSES  
BLOWING. THIS CHANGE APPLIES TO BOTH THE OLDER (701-1672) AND NEWER  
(701-0194) FILTER BOARDS.

	BEFORE	AFTER
BOARD	701-0194-001	701-0194-002
PWB	410-0230-001	410-0230-002
	FUSE F2 = 10A	F2 = SHORT
	FUSES F1, 3, 4, 5 = 3A	F1, 3, 4, 5 = SHORT
	FUSE F6 & F7 = 3A	FUSE F6 & F7 = 5A (416-3050)
SCHEMATIC	30-701-0194-001	30-701-0194-002

COMMENTS: REWORK ALL UNITS THAT COME IN FOR UPDATE OR REPAIR PER THE  
ATTACHED REWORK INSTRUCTIONS.

ECP# 0321      REWORK 065-0321  
FIELD BULLETIN # N/A  
SERVICE NOTE # 010  
(0194002.DOC)

**REWORK INSTRUCTIONS**

<b>Asst Affected:</b>	<b>Approvals</b>	<b>Date</b>	<b>Distr.</b>
701 0194 001	ME [Signature]	9-29-86	PC
701 1672 (SERVICE ONLY)	PE [Signature]	10-6-86	ME
	QA [Signature]	10/3/86	CRO
	SERVICE [Signature]	12/6/86	CM
			APPL

PERFORM ALL REWORK PER DATA I/O WORKMANSHIP STANDARDS

REMOVE F1 THRU F7 FROM FILTER BOARD. ADD JUMPER WIRES; PERFORMED INSULATED, P.N. 4020013-60 TO LOCATIONS F1, F2, F3, F4, and F5. IN LOCATIONS F6 and F7 REPLACE WITH; P.N. 416 3050, FUSE 5A, 125V, FAST BLOW. REMARK BOARD 701 0194 002. CRG UNITS TO HAVE NEW 701 0194 INSTALLED.

RETEST, and INSPECT, RETURN TO STORES

SPECIAL NOTE FOR SERVICE OR UPDATES. WHEN A M29B IS RETURNED TO A SERVICE CENTER, THE REWORK SHOULD BE PERFORMED EVEN THOUGH THE CUSTOMER HAS NOT REQUESTED IT. REWORK SHOULD ALSO BE DONE TO THE 701-1672 FILTER KDS, USED ON OLDER M29B'S.

REWORK INSTRUCTIONS

Assy Affected:	Approvals	Date	Distr.
750-1516-003 B3	MEll Barrow	4/17/85	PC
701-1672-009 B1	PE Willie Kuhn	4/17/85	ME
	QA James Nether	4/17/85	CRQ
			GM
			APPL
Op #	Assy P/N	THIS REWORK WILL BE DONE TO THE 750-1516-003 LEVEL	
		NOTES: 1) THIS REWORK APPLIES TO 701-1672-009 USING	
		410-1678-002 B ONLY	
		2) PERFORM ALL REWORK PER DATA I.O. WORKMANSHIP	
		MANUAL	
10	701-1672-009	CUT HEADER BODY OF 4010550002 AND REMOVE PIN SHOWN IN FIGURE 4.	
20		INSTALL 709-0190-001 SHOWN IN FIGURE 5	
30		RE-LABEL AS 701 1672 013 B2	
40		RE-LABEL AS 750 1516 004	

REWORK

MANUFACTURING ORDER

PART NUMBER 701-1672-009 REVISION \_\_\_\_\_

PART DESCRIPTION FILTER BOARD

FIGURE 4

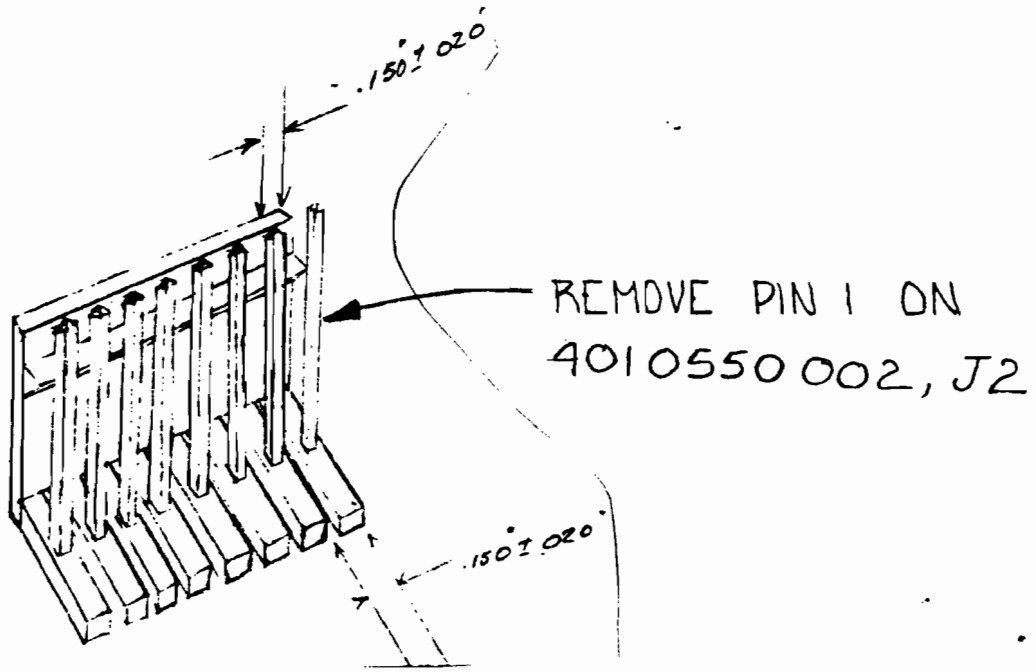
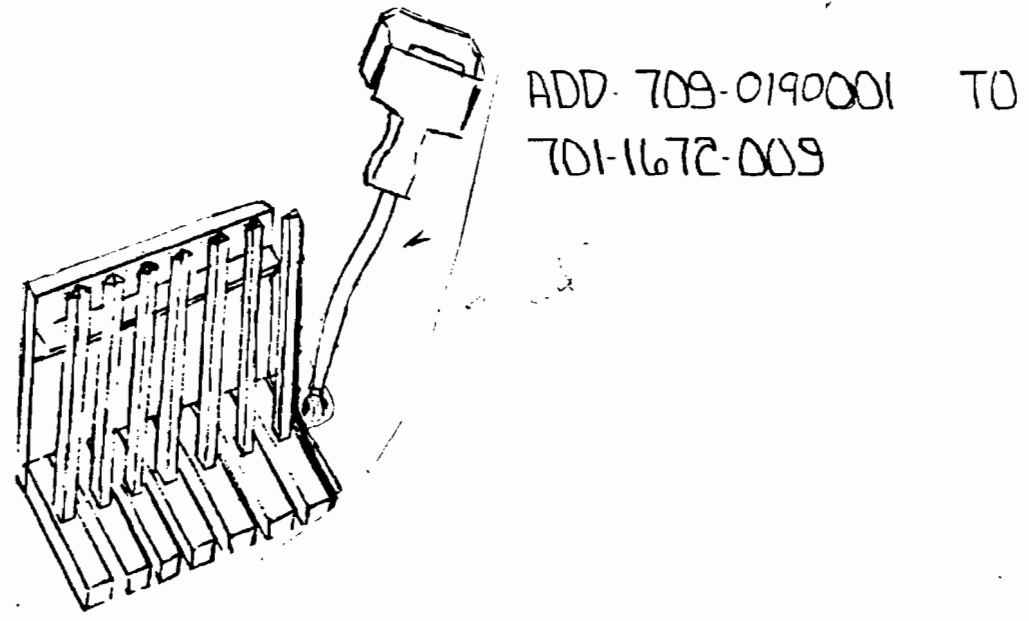


FIGURE 5



ME Al Barrow DATE 4/17/85 REWORK REV B

PE Shirley Kishler DATE 4/17/85

QA Jeanne Truckel DATE 4/17/85

REWORK INSTRUCTIONS

Op #	Assy P/N	ME	Apprvals	Date	Distr.
		ME <u>Ell Barone</u>		4/17/85	PC
		PE <u>John Kordy</u>		4/17/85	ME
		QA <u>James Tucker</u>		4/17/85	CRO
					CM
					APPL
		NOTES: 1) THIS REWORK APPLIES TO 709-DICT-001 ONLY			
		2) PERFORM ALL REWORK PER DATA I.O. WORKMANSHIP STANDARDS.			
10	709-DICT-001	MAKE A 1/2" CUT IN THE WEBBING BETWEEN THE RED AND BROWN WIRES (FROM THE CONNECTOR, BOTH ENDS).			
20		CUT AWAY .150" ± .020" THAT PART OF THE CONNECTOR COMMON TO THE BROWN WIRE. NOTE: BEFORE CUTTING REMOVE THE BROWN WIRE AS SHOWN IN FIGURE 6.			
30		STRIP AND CRIMP FEMALE TERMINALS 401-015 AT BOTH ENDS OF BROWN WIRE AS SHOWN IN FIGURE 7.			
40		RE-LABEL AS 709-DICT-002			



# REWORK MANUFACTURING ORDER

PART NUMBER \_\_\_\_\_ REVISION \_\_\_\_\_

PART DESCRIPTION \_\_\_\_\_

FIGURE 6

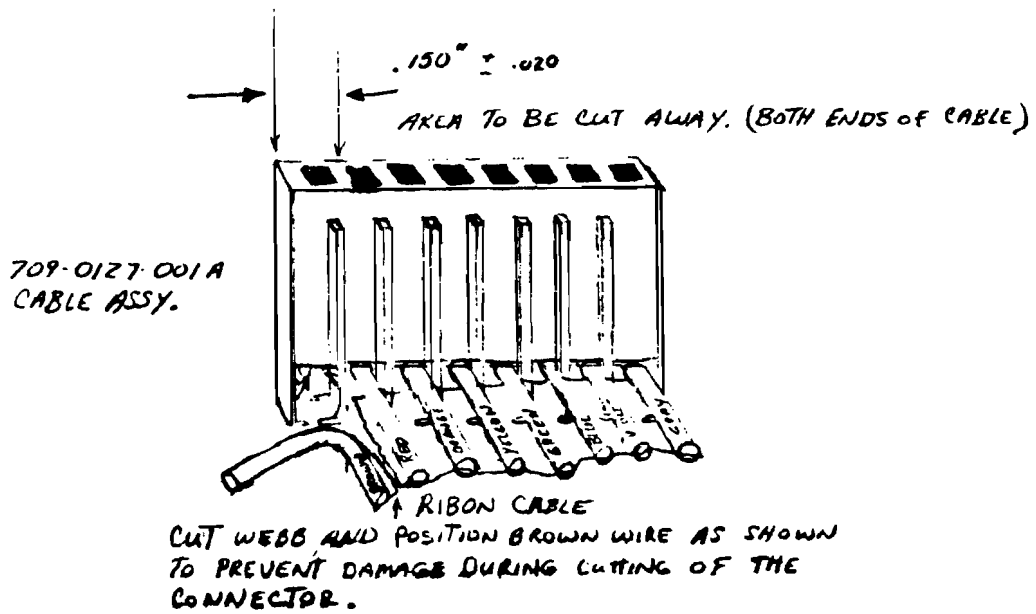
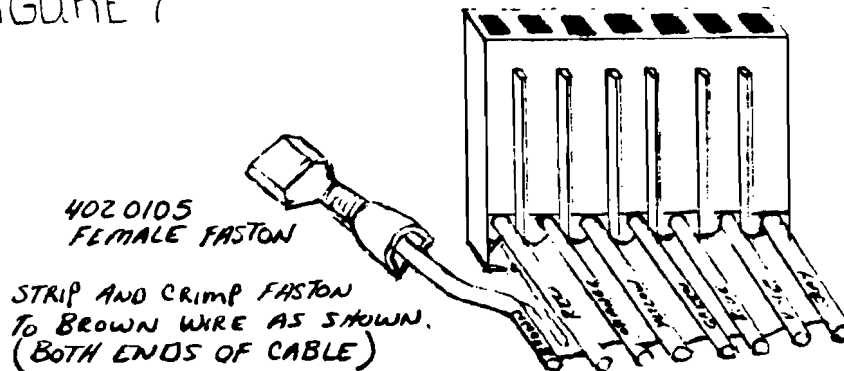


FIGURE 7



ME Al Barcus DATE 7/17/85 REWORK REV B

PE D. H. H. H. H. DATE 4/17/93

QA Jeanne Tichel DATE 4/17/85

# SERVICE CHANGE NOTICE

ASSY.# 701-1672 DATE 6-28-84 SCN# 001

TITLE: Filter Board

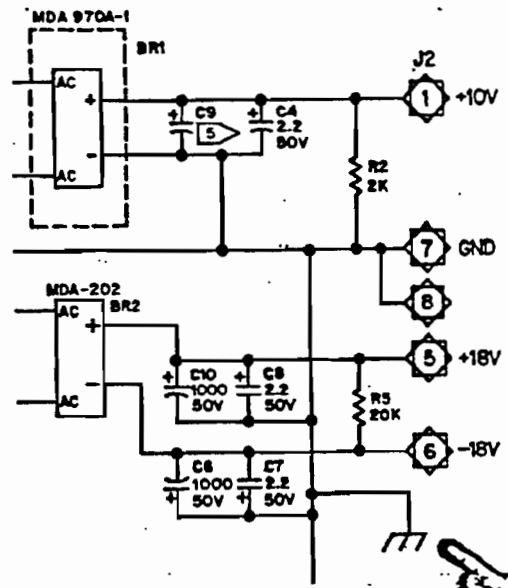
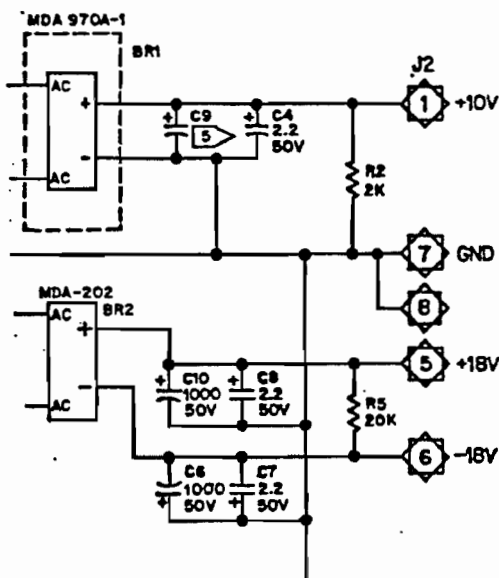
REASON FOR CHANGE: To connect circuit ground to chassis ground.

BEFORE

AFTER

701-1672-005

702-1672-009



COMMENTS: Connect a Jumper wire from circuit ground near C8 to the nearest mounting screw per the attached instructions. See 701-0047 SCN#001 and 990-0013 SCN#002 for additional rework.

REVISION RECORD

PART NUMBER	NEW REVISION
702-1672	-009
30-702-1672	C

ECN# ECP-0024 RE-WORK# 065-0024

FIELD BULLETIN # \_\_\_\_\_

NOTES: \_\_\_\_\_

REWORK INSTRUCTIONS

Assy Affected:	ME	Approvals	Date	Distr.
701-1672-002	PE Williams	<i>[Signature]</i>	6/27/84	PC
	QA Gannon	<i>[Signature]</i>	6-28-84	ME
				CRG
				CM
				APPL

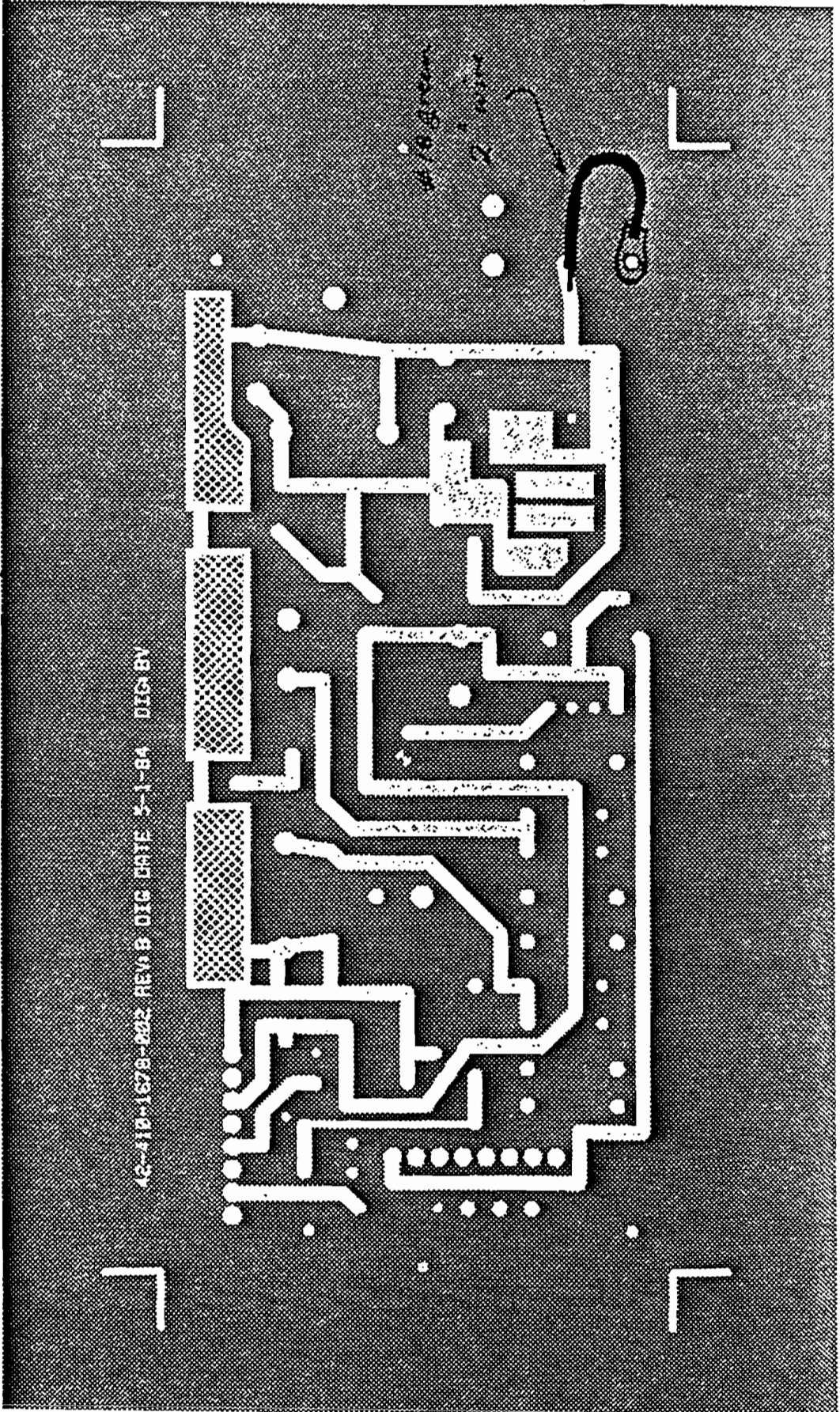
Op #	Assy P/N	(408-1266)	(402-0012)
1	701-1672	Attach a 2" green #18 wire w/ ring lug to the ground plane at the lower right corner of the PWA	
		To remove the mask, bread the surface near the center of the area to be cleared. Apply heat and solder with gentle iron pressure and the mask will boil off.	
		See page 9 for drawing.	

Remark assembly 701-1672-009 BI

**NOTE** This rework will create one configuration (-009) where two existed before. (-001 and -005) These assemblies are electrically and mechanically equivalent. They differ only from a documentation standpoint and slightly in appearance. Configuring accuracy may require the use of previous generation BOM's and drawings.

065-24  
A

WAS



42-410-1672